

PLAN TH 62

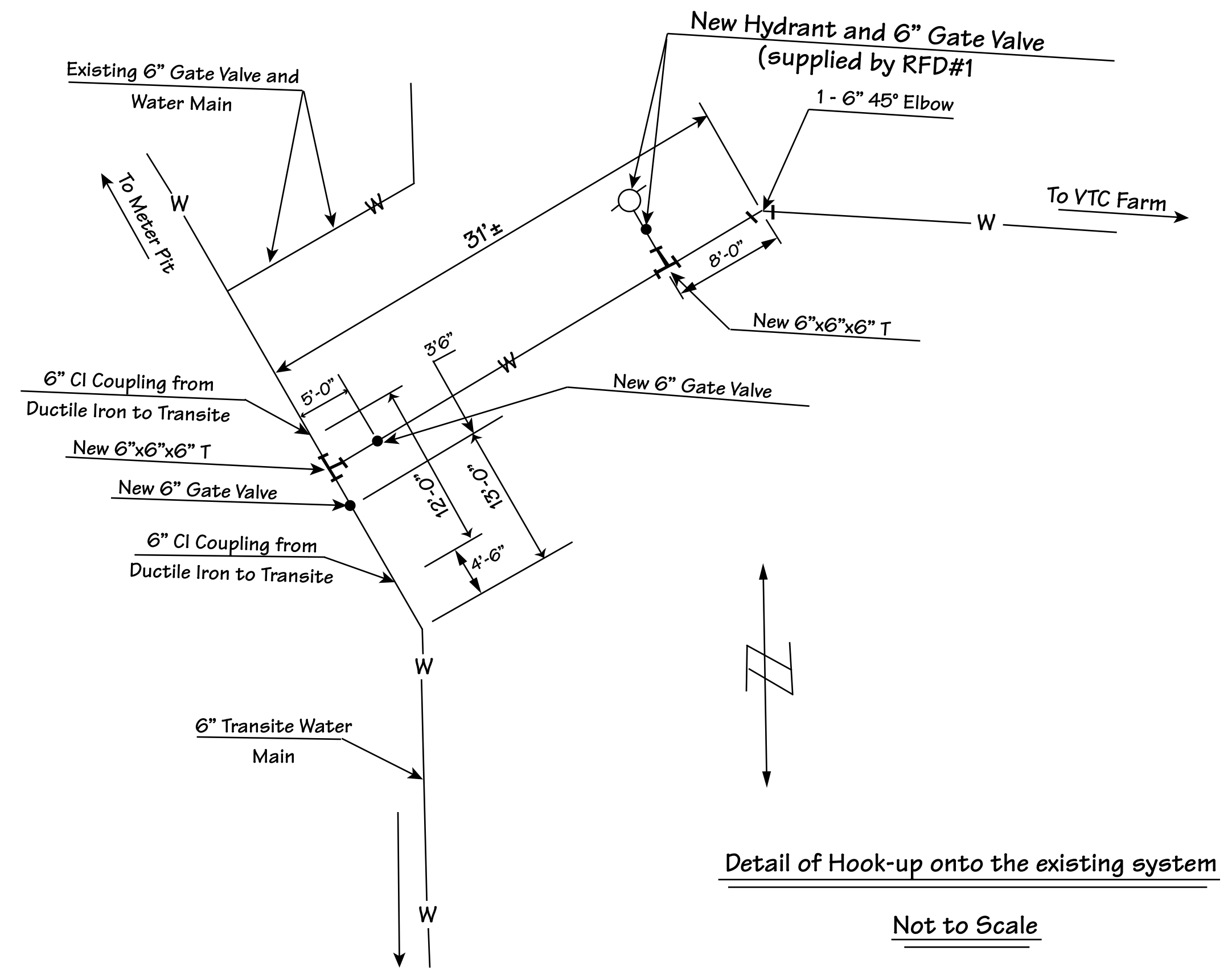
SCALE: 1" = 20'

GENERAL NOTES

- EXISTING HOMES PRESENTLY HAVE WATER FROM PVC SERVICE CONNECTIONS. CONTRACTOR TO MAINTAIN UNINTERRUPTED WATER SUPPLY.
- ROADWAY AND PRIVATE DRIVES SHALL BE RESTORED AS DIRECTED BY THE ENGINEER, AT NO EXTRA COST TO OWNER.

| Property Owner | Distance from 6" Main to Curb Stop |
|-----------------|------------------------------------|
| 21 Water Street | 9' |
| 44 Water Street | 7' |
| 45 Water Street | 3.5' |
| 57 Water Street | 50' |
| 62 Water Street | 45' |

All connections between the new 6" main and the individual curb stops are 3/4" Type K copper.

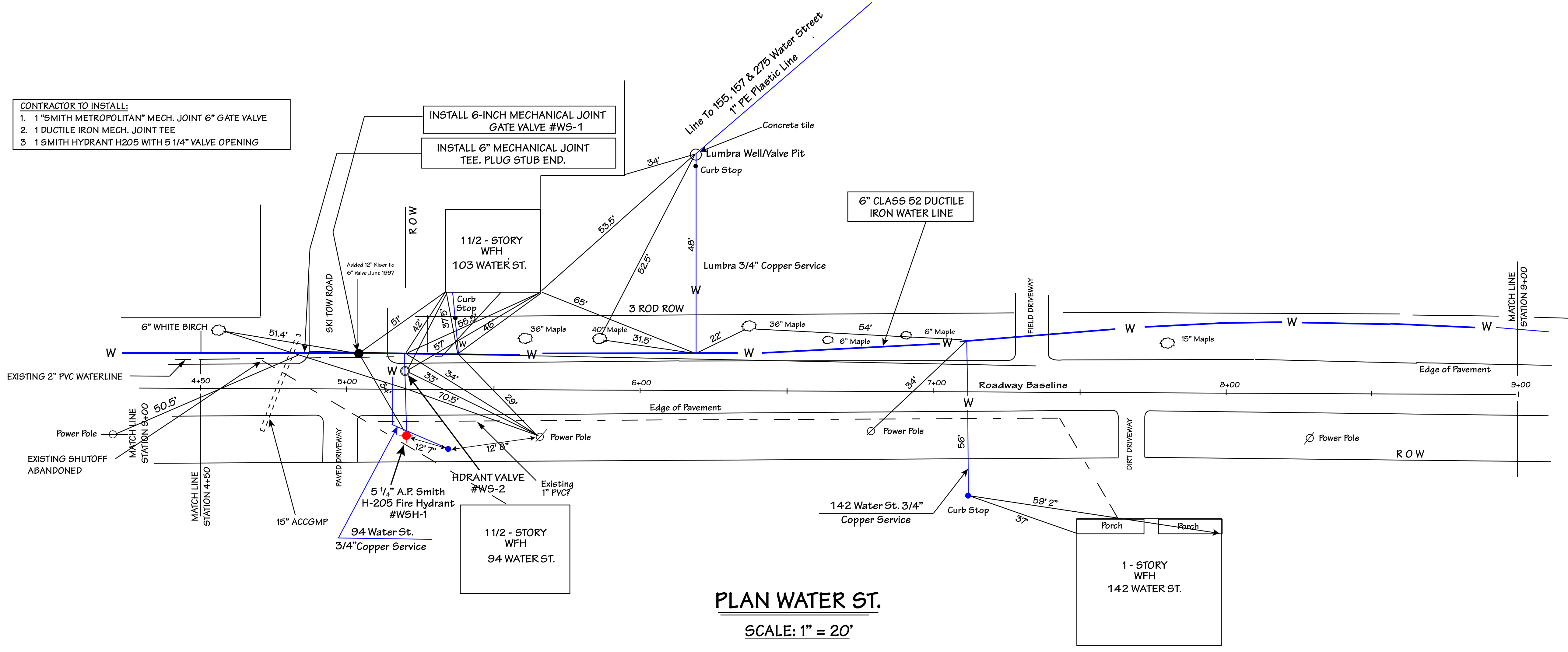


Detail of Hook-up onto the existing system
Not to Scale

"AS BUILT"
July 1981

| | | | | |
|-----------------|----------------------|---|--|-------------------------------|
| | | RANDOLPH FIRE DISTRICT NO. 1 | | |
| | | WATER WORKS IMPROVMENTS | | |
| | | RANDOLPH CENTER VERMONT | | |
| Date | Ch'k'd | Revision | | |
| Drawn by JW | Date 7/31/80 | | | |
| Checked by BKT | Scale 1" - 20' | | | |
| Approved by CRD | Project No. 80113.01 | | | |
| | | CIVIL ENGINEERING ASSOCIATES, INC. SHELburnE, VERMONT | | SHEET 1 of 5 |

- CONTRACTOR TO INSTALL:
- 1 "SMITH METROPOLITAN" MECH. JOINT 6" GATE VALVE
 - 1 DUCTILE IRON MECH. JOINT TEE
 - 1 SMITH HYDRANT H205 WITH 5 1/4" VALVE OPENING




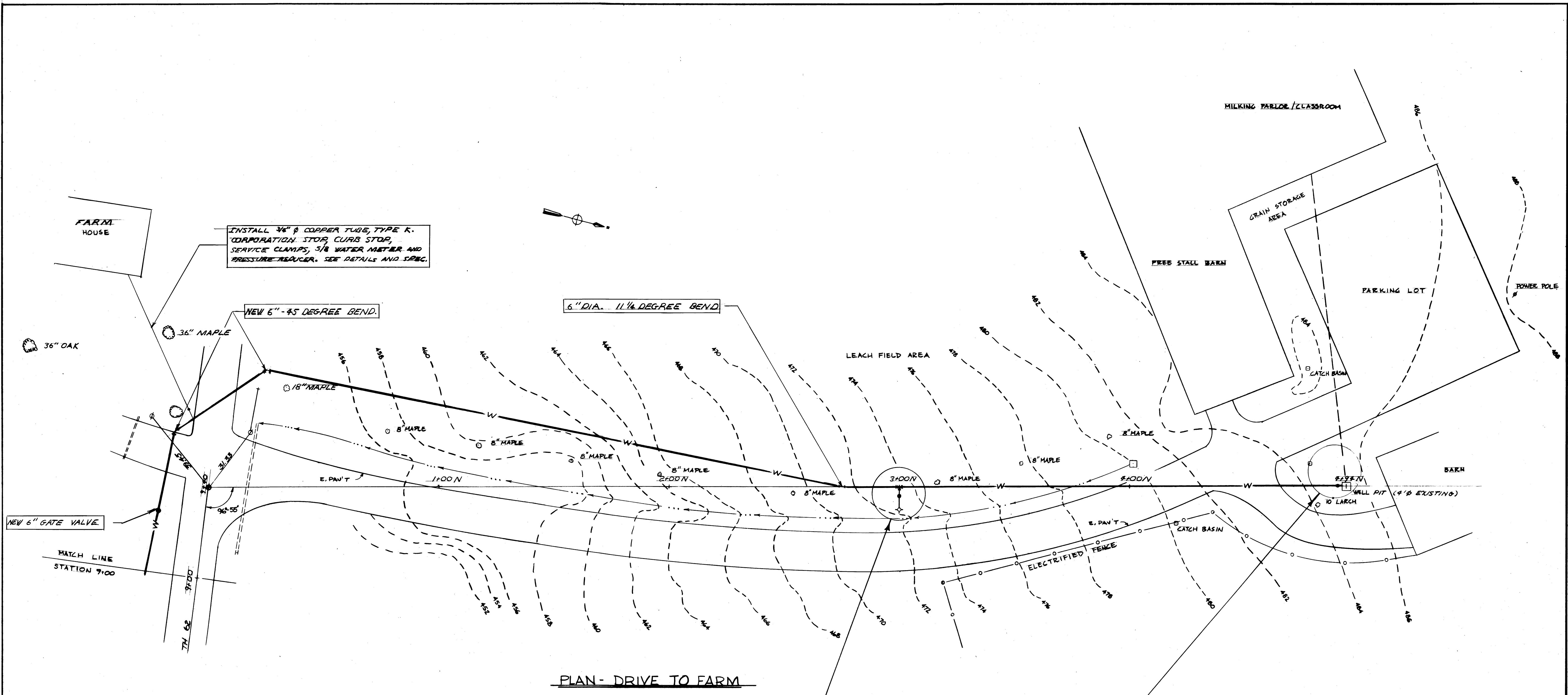
PLAN WATER ST.
SCALE: 1" = 20'

| PROPERTY | DISTANCE FROM 6" MAIN TO CURB STOP |
|-----------------------|------------------------------------|
| 57 Water Street | 12' |
| 94 Water Street | 46' |
| Ski Tow Rd Properties | 48' |
| 142 Water Street | 56' |

All Connections Between the New 6" Main and the Individual curb stops are 3/4" type K copper

"AS BUILT"
July 1981

| | | | |
|-----------------|----------------------|---|--|
| | | RANDOLPH FIRE DISTRICT NO. 1 | |
| | | WATER WORKS IMPROVMENTS | |
| | | RANDOLPH CENTER VERMONT | |
| Date | Ch'k'd | Revision | |
| Drawn by JW | Date 7/31/80 | | |
| Checked by BKT | Scale 1" - 20' | | |
| Approved by CRD | Project No. 80113.01 | | |
| | |  CIVIL ENGINEERING ASSOCIATES, INC. SHELBURNE, VERMONT | |
| | | SHEET 2 of 5 | |



INSTALL 3/4" Ø COPPER TUBE, TYPE K. CORPORATION STOP, CURB STOP, SERVICE CLAMPS, 5/8" WATER METER AND PRESSURE REDUCER. SEE DETAILS AND SPEC.

NEW 6" - 45 DEGREE BEND.

6" DIA. 11 1/4 DEGREE BEND

NEW 6" GATE VALVE

PLAN - DRIVE TO FARM

SCALE: 1" = 20'

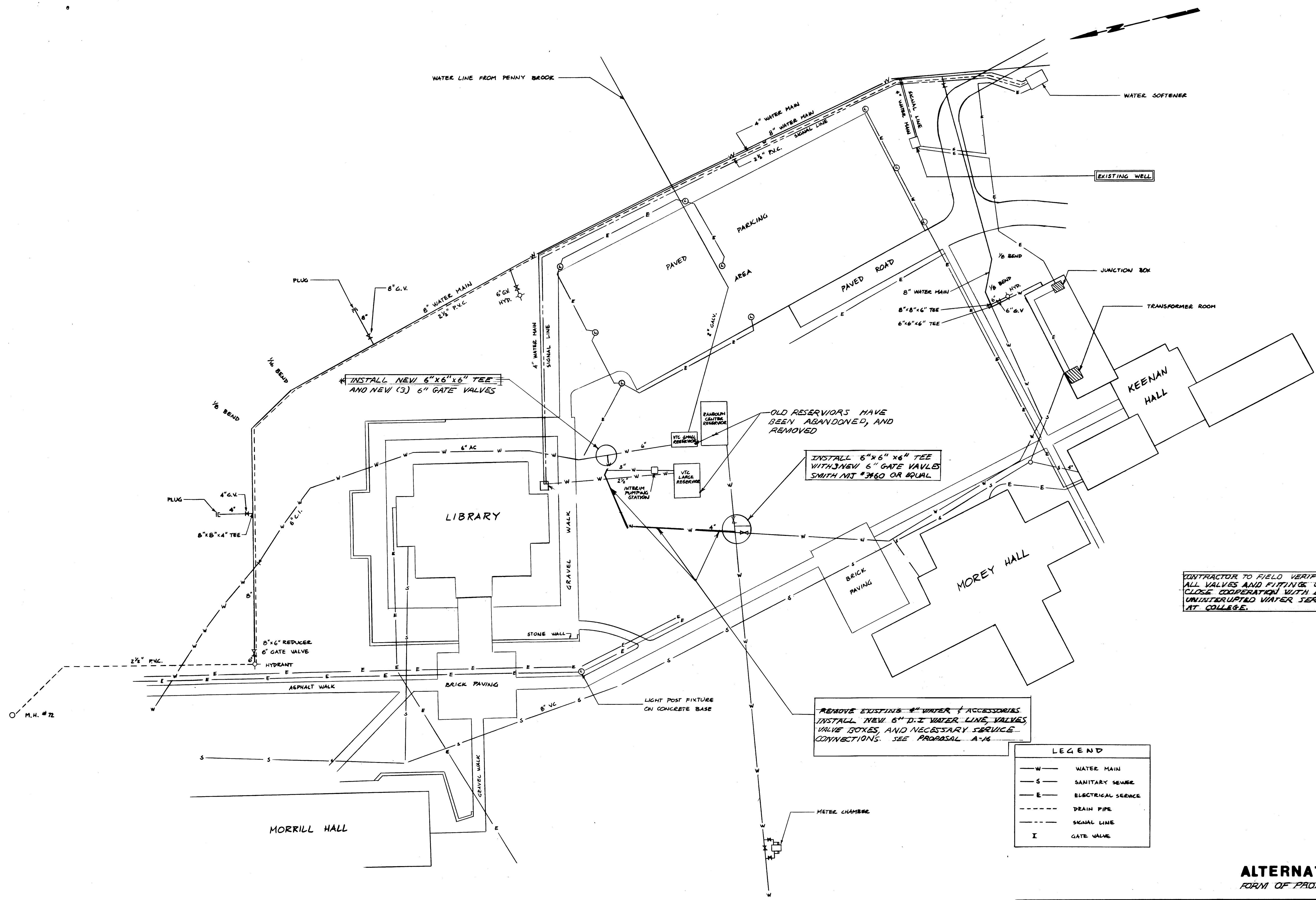
CONTRACTOR TO INSTALL:
 1. 1 SMITH METROPOLITAN MECH. JOINT 6" GATE VALVE.
 2. 1 DUCTILE IRON TEE (MECHANICAL JOINT).
 3. 1 SMITH HYDRANT H2OS WITH 5/4" VALVE.

CONTRACTOR TO INSTALL:
 1. 1 SMITH METROPOLITAN MECH. JOINT 6" GATE VALVE.
 2. REDUCE FROM 6" TO 4" & 4" TO 2" OUTSIDE EXISTING WELL PIT. USE DUCTILE IRON MJ FITTING.
 3. INSTALL 2" SHUT OFF AND PRESSURE REDUCING VALVE.
 4. INSTALL 2" SHUT OFF TEES, ELBOWS AND 2" ROCKWELL TURBO METER W-150 DR OR EQUIV.
 5. PROVIDE BYPASS AROUND NEW WATER METER.
 6. WORK AS DIRECTED BY ENGINEER.

SPECIAL NOTE
 1. CONTRACTOR TO REMOVE TWO SUBMERSIBLE PUMPS. THEY SHALL BE REMOVED FROM THE FARM HOUSE AND BARN WELLS AFTER NEW SERVICE IS ESTABLISHED. THEY SHALL REMAIN THE PROPERTY OF V.T.C. AND SHALL BE STORED AT THEIR DIRECTION.



| | |
|--|------------------------------------|
| RANDOLPH FIRE DISTRICT NO. 1 | |
| WATER WORKS IMPROVEMENTS | |
| 612200 | REMOVED 1 HYDRANT, RELOCATED ALONG |
| Date | CHEN |
| Drawn by | J.W. |
| Checked by | BKI |
| Approved by | GAB |
| Date | JUL 21 2011 |
| Date | AS SHOWN |
| Project No. | 2011.01 |
| RANDOLPH CENTER VERMONT | |
| CIVIL ENGINEERING ASSOCIATES, INC. CHESLEBURG, VERMONT | |
| SHEET 3015 | |



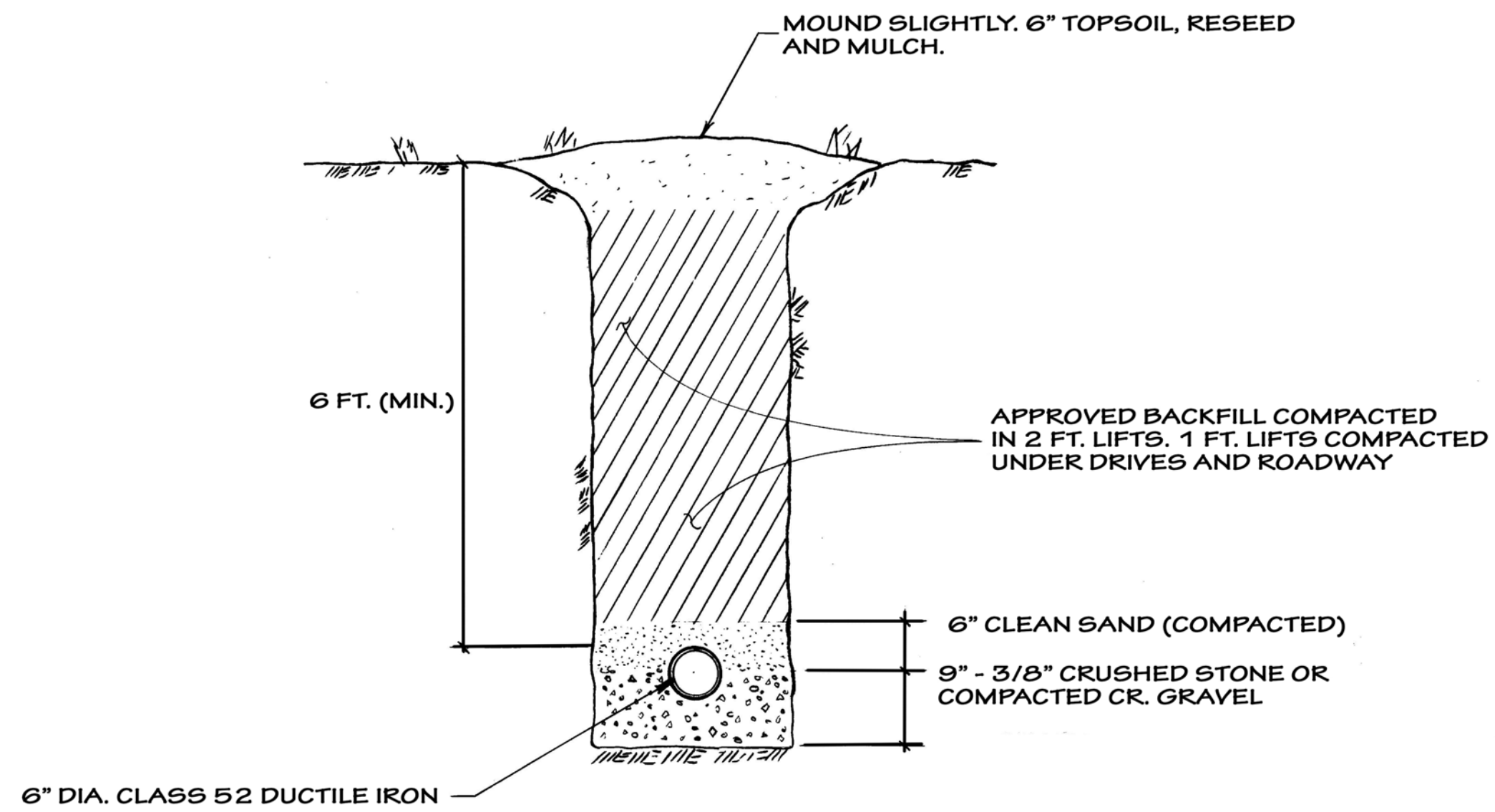
CONTRACTOR TO FIELD VERIFY LOCATION AND SIZE OF ALL VALVES AND FITTINGS. CONTRACTOR TO WORK IN CLOSE COOPERATION WITH ENGINEER, VTC, AND FIELD UNINTERRUPTED WATER SERVICE IS TO BE MAINTAINED AT COLLEGE.

| LEGEND | |
|---------|--------------------|
| — W — | WATER MAIN |
| — S — | SANITARY SEWER |
| — E — | ELECTRICAL SERVICE |
| --- | DRAIN PIPE |
| - - - - | SIGNAL LINE |
| I | GATE VALVE |

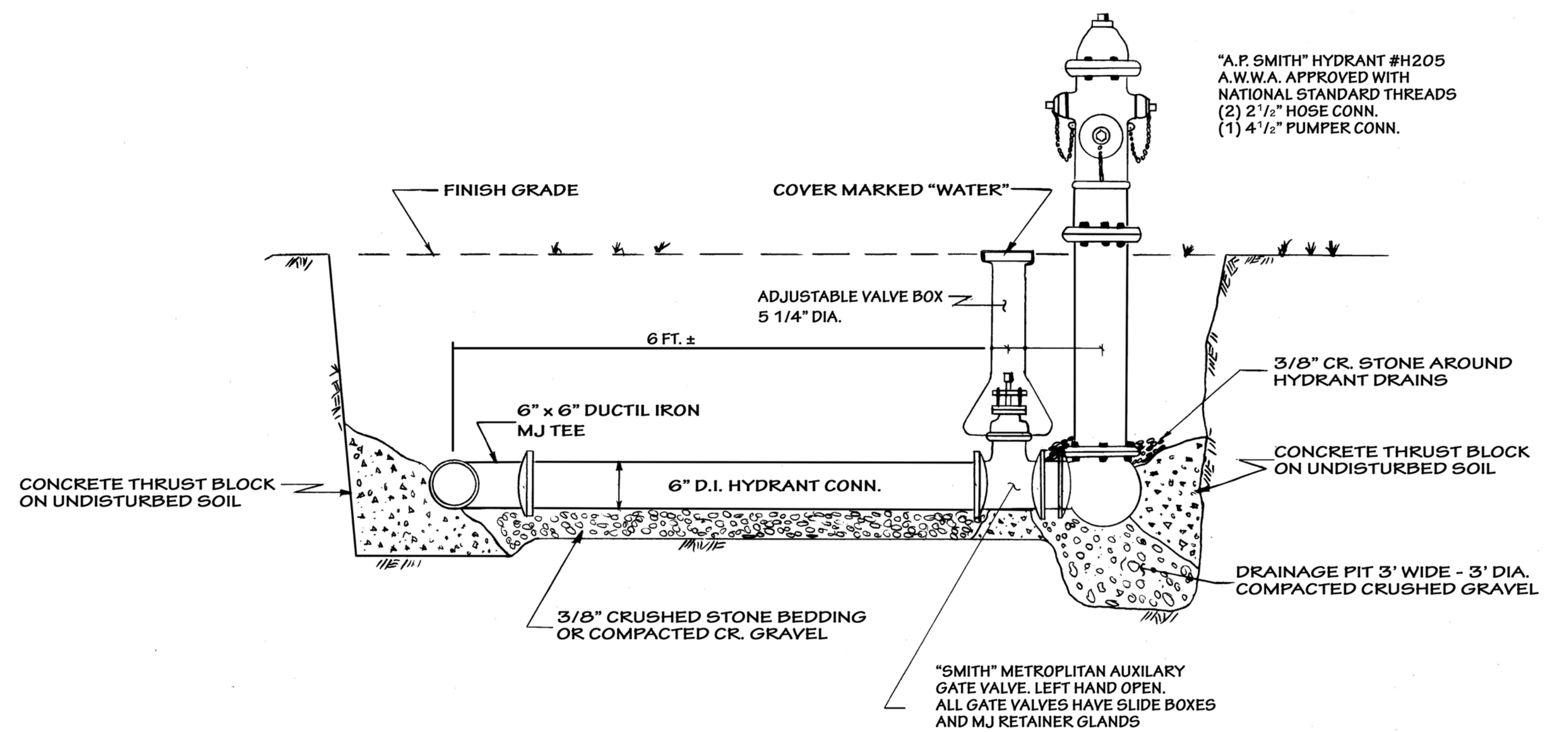
ALTERNATE "D"
FORM OF PROPOSAL A-16

| | | | |
|--|--------------------|--|---|
| | | VERMONT TECHNICAL COLLEGE SITE PLAN | |
| | | RANDOLPH CENTER VERMONT | |
| Date: 7/31 Status: CHNG Revision: | ADDED ALT. D NOTES | Drawn by: JCW Checked by: BKT Approved by: | Date: JUL 89 Scale: 1"=40' Project No.: 82113 |
| CIVIL ENGINEERING ASSOCIATES, INC. BRANDIS, VERMONT | | SHEET 4 of 4 | |

C:\Users\pmead\CEACORP\Desktop\VTC Water.dwg, 2/2/2017 12:24:41 PM, pmead

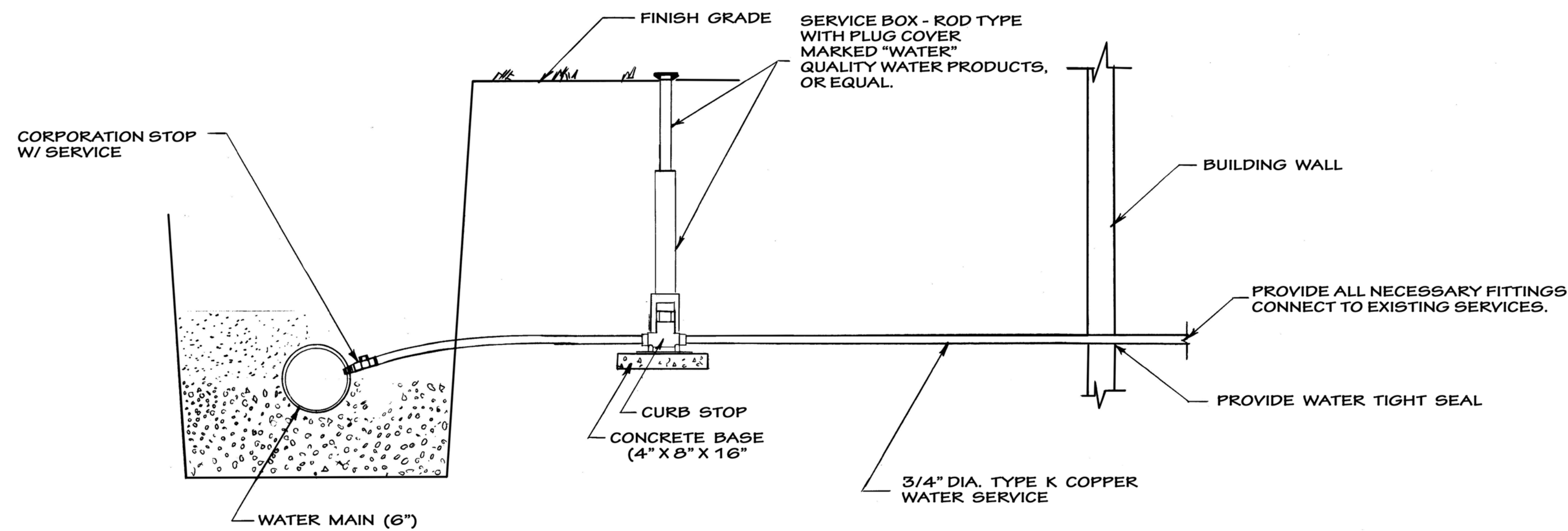


TYPICAL TRENCH DETAIL
(NO SCALE)



TYPICAL HYDRANT DETAIL
(NO SCALE)

NOTE: AT THE CONTRACTORS OPTION AND WITH WRITTEN APPROVAL, DUCTILE IRON HYDRANT TEES MECH. JOINT MAY BE USED.



TYPICAL SERVICE CONNECTION
(NO SCALE)

THRUST BLOCKS

1. HYDRANTS - 3 1/2 SF ON UNDISTURBED SOIL
2. 45 DEG. BEND - 2 1/2 SF ON UNDISTURBED SOIL
3. 1 1/4 DEG. BEND - 1 SF ON UNDISTURBED SOIL
4. TEES - 3 1/2 SF ON UNDISTURBED SOIL

*PIPE AND JOINT BOLTS MUST REMAIN ACCESSIBLE



| | | | |
|--|--------|-------------|------------------------|
| Date | | Revision | |
| Drawn by | J.T. | Date | JULY 31 89 |
| Checked by | R.K.T. | Scale | AS SHOWN |
| Approved by | | Project No. | 88113.01 |
| TYPICAL DETAILS | | | |
| CIVIL ENGINEERING ASSOCIATES, INC. SHELburnE, VERMONT | | | SHEET 5 of 5 |